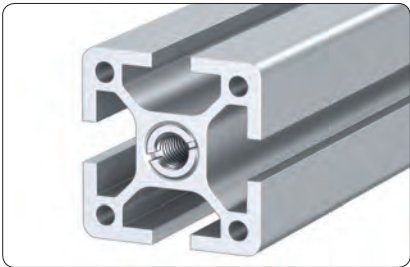
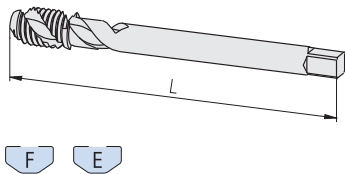


Screw taps
for aluminium machining



Application
Mounting threads in profile centre core holes



Technical data
material: HSS/E
machine threading tap:
• right hand cutting, 20° left spiral fluted
• enlarged chip flute
• 2-pitch thread start
• tolerance class: 6H

| Description | G | L | Weight | Product No. |
|-------------|---------|-------|-----------|---------------|
| Screw tap | M12 | 4.331 | .231 lbs. | 2.99.0412110 |
| Screw tap | 1/2"-13 | 4.331 | .245 lbs. | 2.99.14102013 |

